

June 2006

 No.OC314
 REVISED EDITION-B

TECHNICAL & SERVICE MANUAL

Series PLFY Ceiling Cassettes

R410A / R407C / R22

Indoor unit
 [Model names]
 PLFY-P20VCM-E

PLFY-P25VCM-E

PLFY-P32VCM-E

PLFY-P40VCM-E

[Service Ref.]

PLFY-P20VCM-E.TH
PLFY-P25VCM-E.TH
PLFY-P32VCM-E.TH
PLFY-P40VCM-E.TH

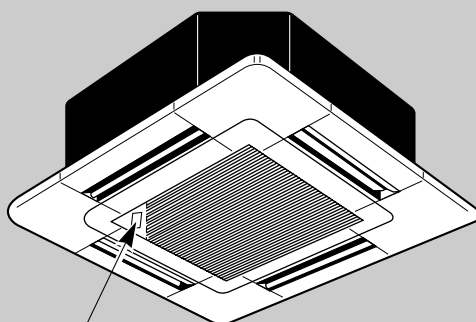
Revision :

- RoHS PARTS LIST has been added.

- Please void OC314 REVISED EDITION-A.

Note :

- RoHS compliant products have <G> mark on spec name plate.
 For servicing of RoHS compliant products, refer to the RoHS Parts List.


 Model name
 indication

INDOOR UNIT

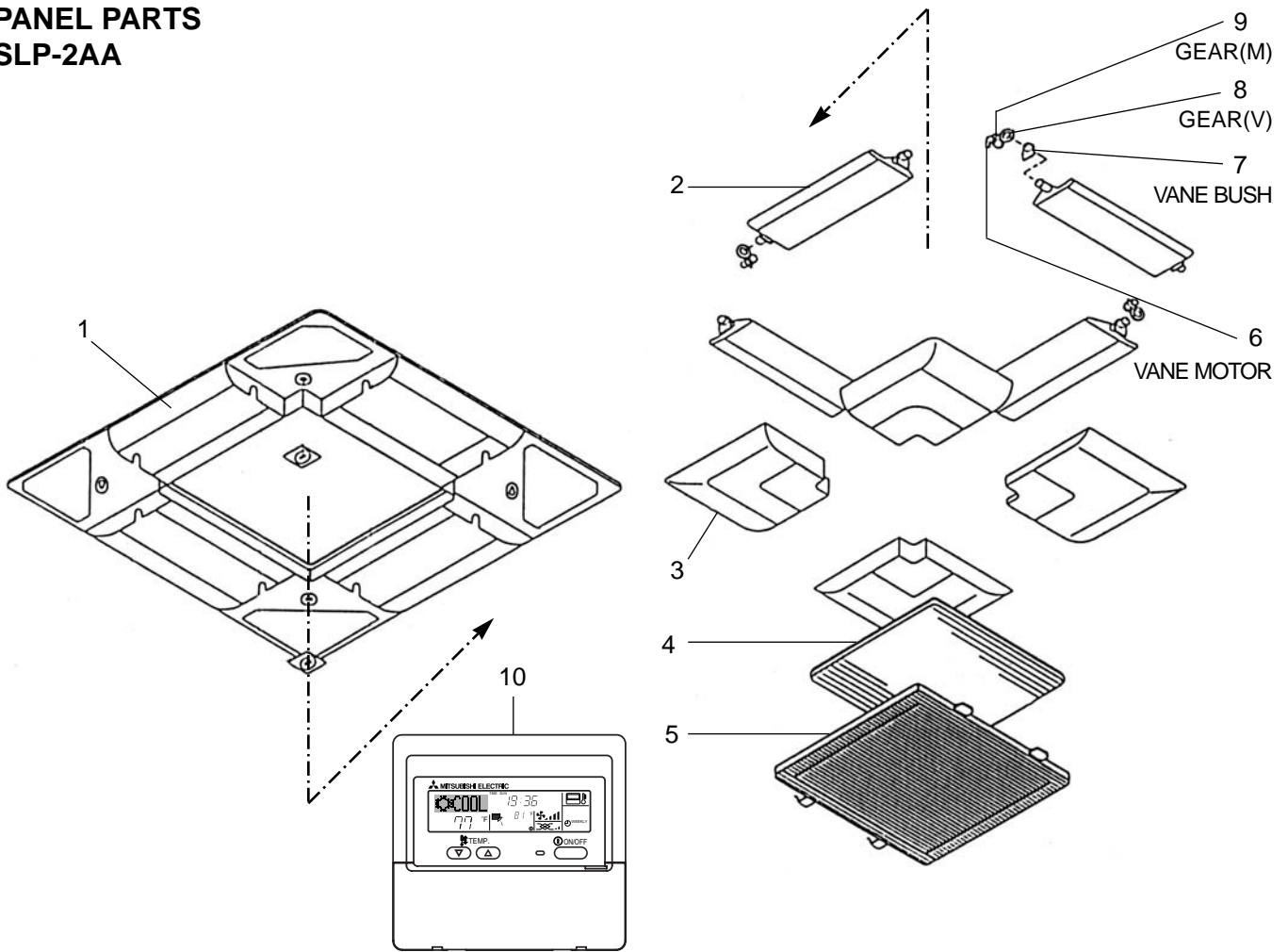
CONTENTS

1. SAFETY PRECAUTION.....	2
2. PART NAMES AND FUNCTIONS	6
3. SPECIFICATIONS.....	8
4. 4-WAY AIR FLOW SYSTEM.....	10
5. OUTLINES AND DIMENSIONS.....	12
6. WIRING DIAGRAM.....	13
7. REFRIGERANT SYSTEM DIAGRAM	14
8. DISASSEMBLY PROCEDURE.....	15
9. TROUBLE SHOOTING.....	18
10. PARTS LIST.....	25
11. RoHS PARTS LIST	29

10

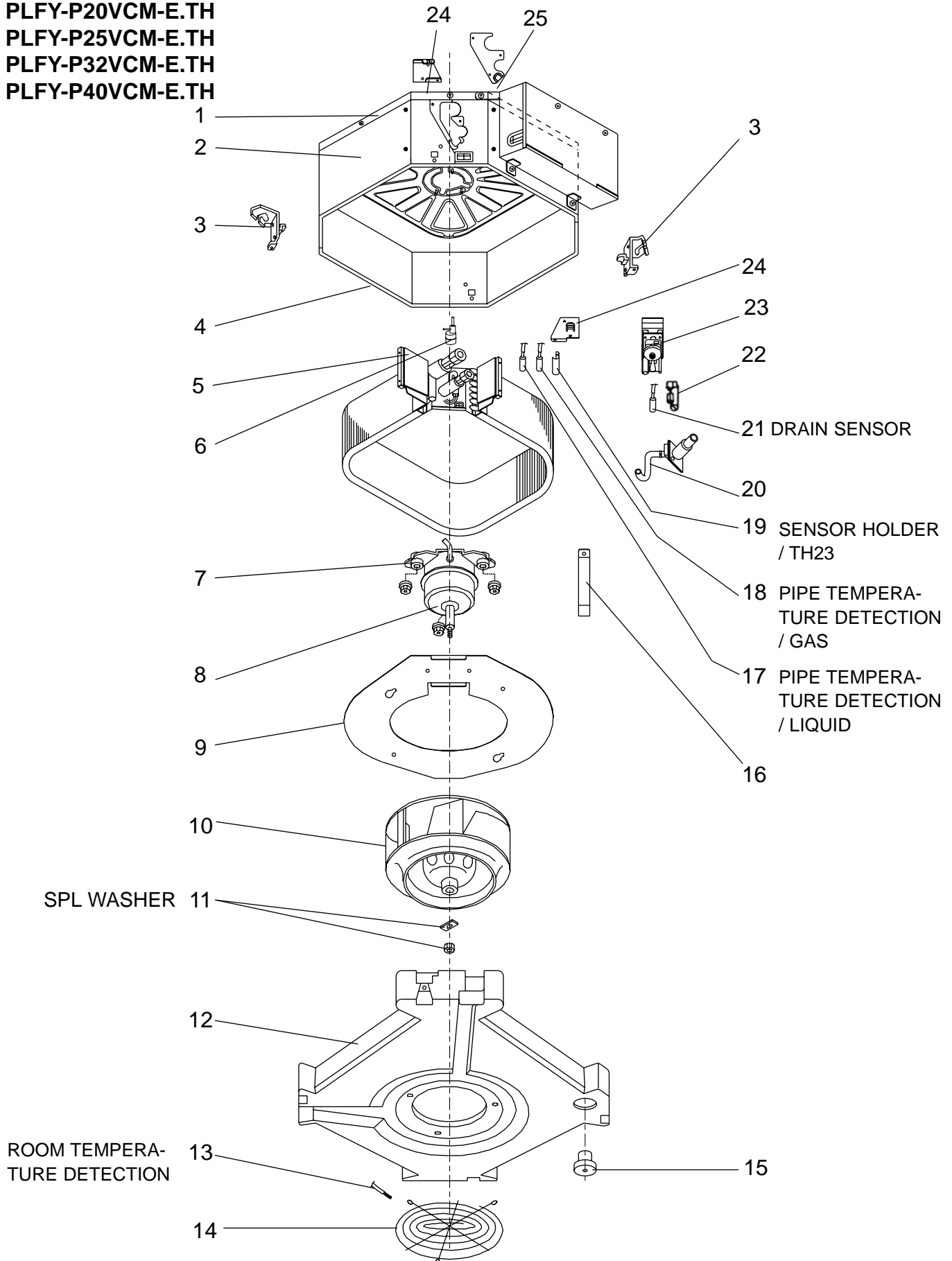
PARTS LIST (Non-RoHS compliant)

PANEL PARTS SLP-2AA



No.	Parts No.	Parts name	Specification	Q'ty/set	Remarks (Drawing No.)	Wiring Diagram Symbol	Recom- mended Q'ty	Price	
				SLP-2AA				Unit	Amount
1	E07 158 003	AIR OUTLET GRILLE		1	Including H2				
2	E07 103 037	AUTO VANE		4					
3	E07 103 975	CORNER PANEL		4					
4	E07 103 100	AIR FILTER		1					
5	E07 103 010	INTAKE GRILLE		1					
6	E07 103 303	VANE MOTOR		4		MV			
7	E07 103 044	VANE BUSH		8					
8	E07 103 031	GEAR (V)		4					
9	E07 103 032	GEAR (M)		4					
10	-	REMOTE CONTROLLER	PAR-21MAA	1					

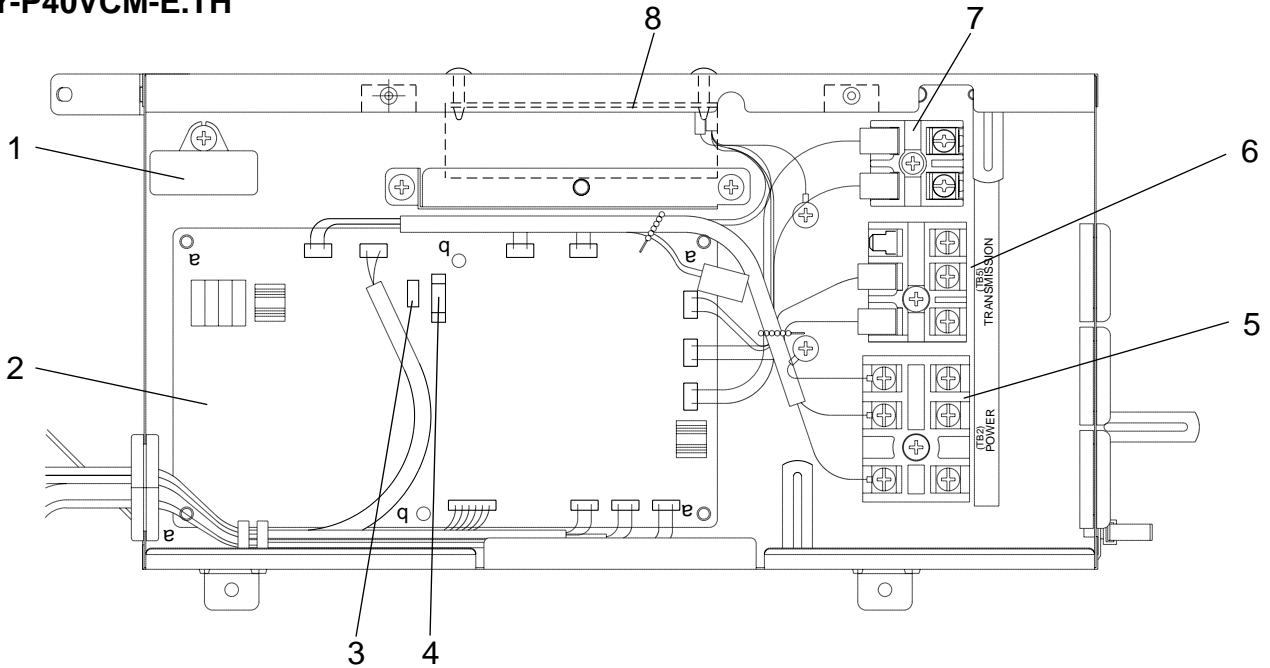
FUNCTIONAL PARTS
PLFY-P20VCM-E.TH
PLFY-P25VCM-E.TH
PLFY-P32VCM-E.TH
PLFY-P40VCM-E.TH





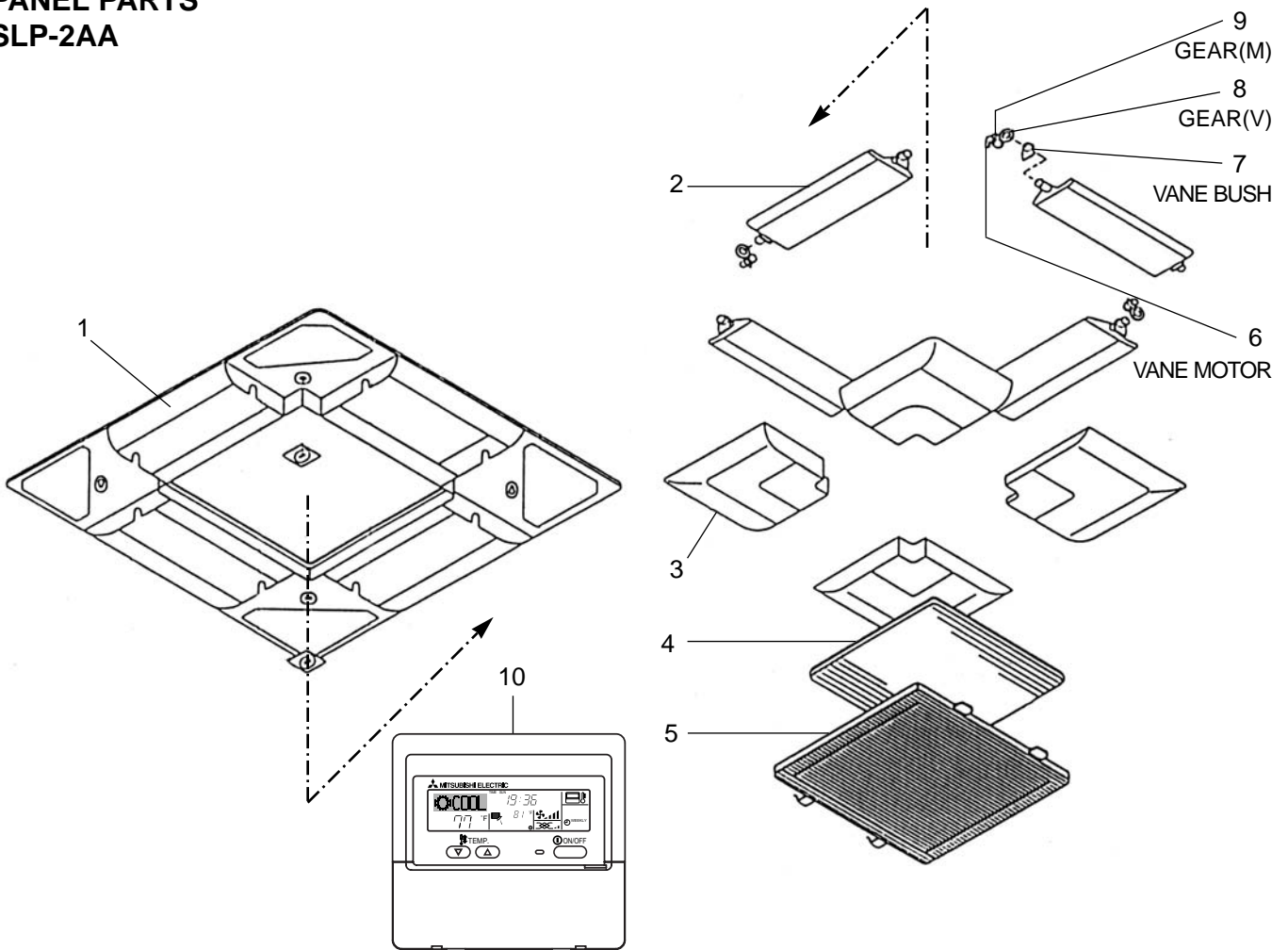
No.	Parts No.	Parts name	Specification	Q'ty/set				Remarks (Drawing No.)	Wiring Diagram Symbol	Recom- mended Q'ty	Price	
				PLFY							Unit	Amount
				P20	P25	P32	P40					
				VCM-E.TH								
1	E07 104 290	BASE		1	1	1	1					
2	E07 104 124	DRUM-1		1	1	1	1					
3	E07 104 808	LEG-1		2	2	2	2					
4	E07 105 124	DRUM-2		1	1	1	1					
5	E07 154 620	INDOOR HEAT EXCHANGER		1	1							
	E07 155 620	INDOOR HEAT EXCHANGER				1	1					
6	E07 154 640	LINEAR EXPANSION VALVE		1	1	1	1		LEV			
7	E07 104 105	MOTOR MOUNT		3	3	3	3	3PCS/SET				
8	E07 168 300	INDOOR FAN MOTOR	PK6V11-LF	1					MF			
	E07 162 300	INDOOR FAN MOTOR	PK6V15-LD		1				MF			
	E07 164 300	INDOOR FAN MOTOR	PK6V20-LL			1			MF			
	E07 166 300	INDOOR FAN MOTOR	PK6V20-LM				1		MF			
9	E07 104 816	FLAT PLATE		1	1	1	1					
10	E07 104 502	TURBO FAN		1	1	1	1					
11	E07 104 097	SPL WASHER		1	1	1	1					
12	E07 104 700	DRAIN PAN		1	1	1	1					
13	E07 154 308	ROOM TEMPERATURE DETECTION		1	1	1	1		TH21			
14	E07 104 520	FAN GUARD		1	1	1	1					
15	E07 104 524	DRAIN PLUG		1	1	1	1					
16	E07 104 648	COIL SUPPORT		1	1	1	1					
17	E07 154 307	PIPE TEMPERATURE DETECTION/LIQUID		1	1	1	1		TH22			
18	E07 154 309	PIPE TEMPERATURE DETECTION/GAS		1	1	1	1		TH23			
19	E07 154 241	SENSOR HOLDER/TH23	(TH23)	1	1	1	1					
20	E07 104 702	DRAIN HOSE		1	1	1	1					
21	E07 104 266	DRAIN SENSOR		1	1	1	1		DS			
22	E07 104 241	SENSOR HOLDER	(DS)	1	1	1	1					
23	E07 104 355	DRAIN PUMP		1	1	1	1		DP			
24	E07 104 809	LEG-2		2	2	2	2					
25	E07 154 006	COVER (DRUM)		1	1	1	1					

ELECTRICAL PARTS
PLFY-P20VCM-E.TH
PLFY-P25VCM-E.TH
PLFY-P32VCM-E.TH
PLFY-P40VCM-E.TH



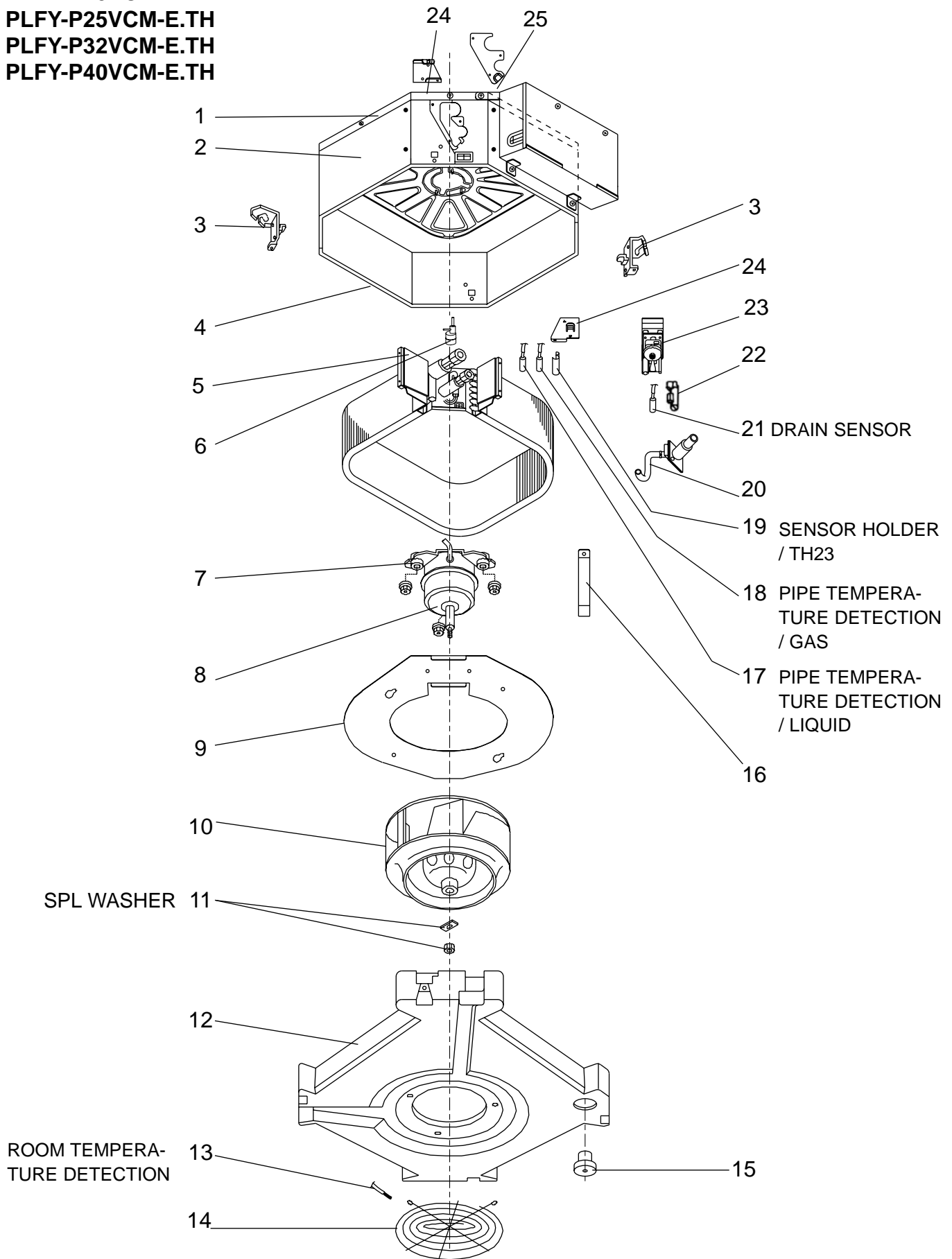
No.	Parts No.	Parts name	Specification	Q'ty/set				Remarks (Drawing No.)	Wiring Diagram Symbol	Recom- mended Q'ty	Price	
				PLFY							Unit	Amount
				P20	P25	P32	P40					
1	E07 154 350	CAPACITOR	1.0 μ F / 440VAC	1					C1			
	E02 095 350	CAPACITOR	1.5 μ F / 440VAC		1	1	1		C1			
2	E07 154 447	INDOOR CONTROLLER BOARD		1					I.B			
	E07 155 447	INDOOR CONTROLLER BOARD			1				I.B			
	E07 156 447	INDOOR CONTROLLER BOARD				1			I.B			
	E07 157 447	INDOOR CONTROLLER BOARD					1		I.B			
3	E02 661 385	VARISTOR		1	1	1	1		ZNR			
4	E07 006 382	FUSE	250V 6.3A	1	1	1	1		FUSE			
5	E07 155 375	TERMINAL BLOCK		1	1	1	1	3P	TB2			
6	E07 154 375	TERMINAL BLOCK		1	1	1	1	3P	TB5			
7	E07 156 375	TERMINAL BLOCK		1	1	1	1	2P	TB15			
8	E07 154 440	INDOOR POWER BOARD		1	1	1	1		P.B			

PANEL PARTS
SLP-2AA



No.	RoHS	Parts No.	Parts name	Specification	Q'ty/set	Remarks (Drawing No.)	Wiring Diagram Symbol	Recom- mended Q'ty	Price	
					SLP-2AA				Unit	Amount
1	G	E17 158 003	AIR OUTLET GRILLE		1	Including H2				
2	G	E17 103 037	AUTO VANE		4					
3	G	E17 103 975	CORNER PANEL		4					
4	G	E17 103 100	AIR FILTER		1					
5	G	E17 103 010	INTAKE GRILLE		1					
6	G	E17 103 303	VANE MOTOR		4		MV			
7	G	E17 103 044	VANE BUSH		8					
8	G	E17 103 031	GEAR (V)		4					
9	G	E17 103 032	GEAR (M)		4					
10	G	-	REMOTE CONTROLLER	PAR-21MAA	1					

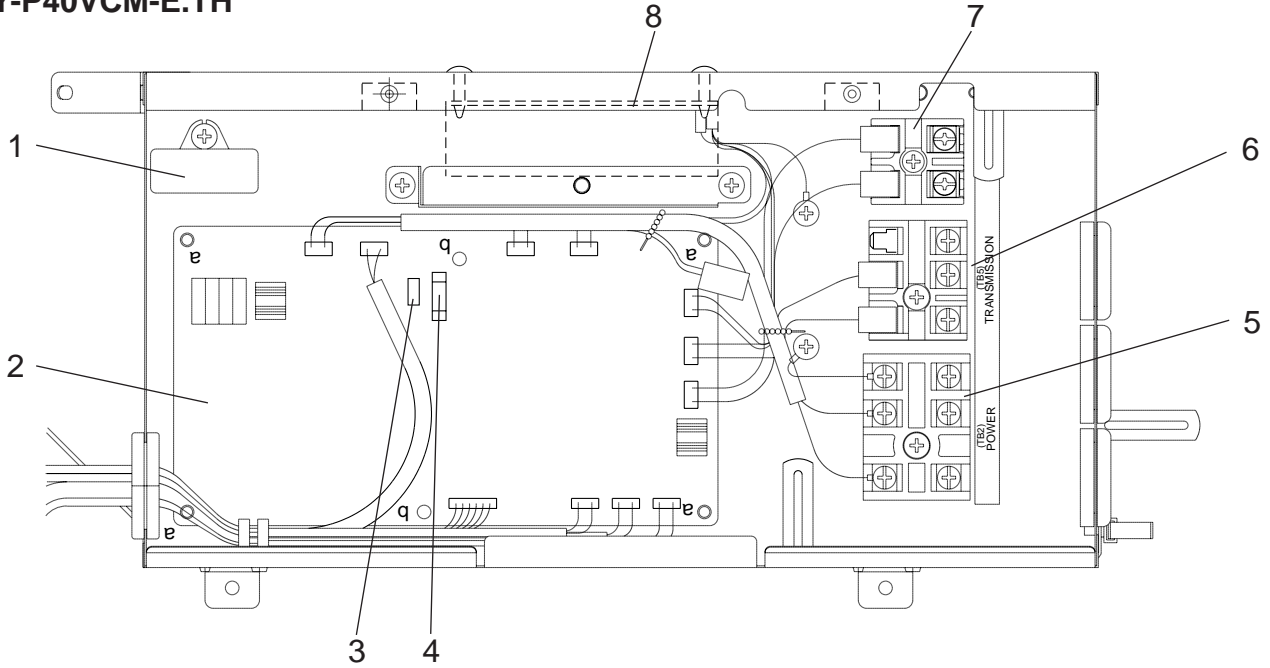
FUNCTIONAL PARTS
PLFY-P20VCM-E.TH
PLFY-P25VCM-E.TH
PLFY-P32VCM-E.TH
PLFY-P40VCM-E.TH





No.	RoHS	Parts No.	Parts name	Specification	Q'ty/set				Remarks (Drawing No.)	Wiring Diagram Symbol	Recom- mended Q'ty	Price	
					PLFY							Unit	Amount
					P20	P25	P32	P40					
1	G	E17 104 290	BASE		1	1	1	1					
2	G	E17 104 124	DRUM-1		1	1	1	1					
3	G	E17 104 808	LEG-1		2	2	2	2					
4	G	E17 105 124	DRUM-2		1	1	1	1					
5	G	E17 154 620	INDOOR HEAT EXCHANGER		1	1							
	G	E17 155 620	INDOOR HEAT EXCHANGER				1	1					
6	G	E17 154 640	LINEAR EXPANSION VALVE		1	1	1	1		LEV			
7	G	E17 104 105	MOTOR MOUNT		3	3	3	3	3PCS/SET				
8	G	E17 168 300	INDOOR FAN MOTOR	PK6V11-LF	1					MF			
	G	E17 162 300	INDOOR FAN MOTOR	PK6V15-LD		1				MF			
	G	E17 164 300	INDOOR FAN MOTOR	PK6V20-LL			1			MF			
	G	E17 166 300	INDOOR FAN MOTOR	PK6V20-LM				1		MF			
9	G	E17 104 816	FLAT PLATE		1	1	1	1					
10	G	E17 104 502	TURBO FAN		1	1	1	1					
11	G	E17 104 097	SPL WASHER		1	1	1	1					
12	G	E17 104 700	DRAIN PAN		1	1	1	1					
13	G	E17 154 308	ROOM TEMPERATURE DETECTION		1	1	1	1		TH21			
14	G	E17 104 520	FAN GUARD		1	1	1	1					
15	G	E17 104 524	DRAIN PLUG		1	1	1	1					
16	G	E17 104 648	COIL SUPPORT		1	1	1	1					
17	G	E17 154 307	PIPE TEMPERATURE DETECTION/LIQUID		1	1	1	1		TH22			
18	G	E17 154 309	PIPE TEMPERATURE DETECTION/GAS		1	1	1	1		TH23			
19	G	E17 154 241	SENSOR HOLDER/TH23	(TH23)	1	1	1	1					
20	G	E17 104 702	DRAIN HOSE		1	1	1	1					
21	G	E17 104 266	DRAIN SENSOR		1	1	1	1		DS			
22	G	E17 104 241	SENSOR HOLDER	(DS)	1	1	1	1					
23	G	E17 104 355	DRAIN PUMP		1	1	1	1		DP			
24	G	E17 104 809	LEG-2		2	2	2	2					
25	G	E17 154 006	COVER (DRUM)		1	1	1	1					

ELECTRICAL PARTS
PLFY-P20VCM-E.TH
PLFY-P25VCM-E.TH
PLFY-P32VCM-E.TH
PLFY-P40VCM-E.TH



No.	RoHS	Parts No.	Parts name	Specification	Q'ty/set				Remarks (Drawing No.)	Wiring Diagram Symbol	Recom- mended Q'ty	Price	
					PLFY							Unit	Amount
					P20	P25	P32	P40					
1	G	E17 154 350	CAPACITOR	1.0 μ F / 440VAC	1					C1			
	G	E12 095 350	CAPACITOR	1.5 μ F / 440VAC		1	1	1		C1			
2	G	E17 154 447	INDOOR CONTROLLER BOARD		1					I.B			
	G	E17 155 447	INDOOR CONTROLLER BOARD			1				I.B			
	G	E17 156 447	INDOOR CONTROLLER BOARD				1			I.B			
	G	E17 157 447	INDOOR CONTROLLER BOARD					1		I.B			
3	G	E12 661 385	VARIATOR		1	1	1	1		ZNR			
4	G	E17 006 382	FUSE	250V 6.3A	1	1	1	1		FUSE			
5	G	E17 155 375	TERMINAL BLOCK		1	1	1	1	3P	TB2			
6	G	E17 154 375	TERMINAL BLOCK		1	1	1	1	3P	TB5			
7	G	E17 156 375	TERMINAL BLOCK		1	1	1	1	2P	TB15			
8	G	E17 154 440	INDOOR POWER BOARD		1	1	1	1		P.B			

MITSUBISHI ELECTRIC CORPORATION

HEAD OFFICE : TOKYO BLDG., 2-7-3, MARUNOUCHI, CHIYODA-KU TOKYO 100-8310, JAPAN